



News Release

FOR IMMEDIATE RELEASE

LeapEd: TRUST SCHOOLS PROGRAMME SHOWCASES SUCCESS IN MALAYSIA'S EDUCATION SECTOR

*Impact Study reveals key insights on the influence of Trust Schools Programme in
Malaysia and education transformation moving forward*

Kuala Lumpur, 2 July 2019 – Established as a social enterprise, LeapEd Services Sdn Bhd ('LeapEd') which is a wholly-owned subsidiary of Khazanah Nasional Berhad, is Malaysia's first homegrown education service provider. LeapEd aims to enrich lives through capacity-building and education transformation and has since impacted over 71,000 students and over 160 schools through its various intervention models such as the District Transformation Programme-AMAN ('DTP-AMAN'), Islamic School Enhancement Programme ('ISEP'), Ground-up School Transformation ('GUSTO') programme, *Program Sekolah Transformasi* ('PreSTasi') as well as the nation's first Trust Schools Programme (TSP) to date.

The Trust Schools Programme (TSP 1.0) is LeapEd's flagship programme designed to develop holistic students with 21st century capabilities. In collaboration with Yayasan AMIR and the Ministry of Education, the programme is a customisable model to ensure its sustainability in Malaysian schools. Since its roll-out in 2011, the TSP 1.0 has impacted over 5,300 parents and 65,000 students in 83 schools across 12 states in Malaysia.

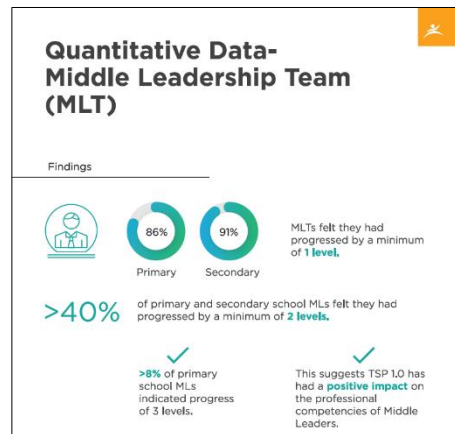
Speaking at a press conference to unveil the insights of the 'Education in the 21st Century – Our Impact' ('Impact Study'), Managing Director of LeapEd Services Sdn Bhd, En Zulhaimi Othman said, ***"The Trust Schools Programme was designed with the future generations in mind. Over the past 9 years, we have worked closely with our strategic partners such as the Ministry of Education and Yayasan AMIR to develop and implement the programme across schools in Malaysia, equipping students with the critical life skills they require as well as transforming schools in a holistic manner by adapting international best practices."*** This recent study was conducted to review the effectiveness of the TSP 1.0, identifying opportunities to further enhance the model moving forward.

Increase in professional competencies

The Impact Study, conducted via a mixed methodology involving surveys, interviews and observations, saw findings from over 3,000 respondents including school staff, students and parents. The study revealed that 95% of secondary school teachers and 76% of primary school teachers moved up by at least 1 level up the scale, e.g. from Starting to Developing or Enhancing to Extending.

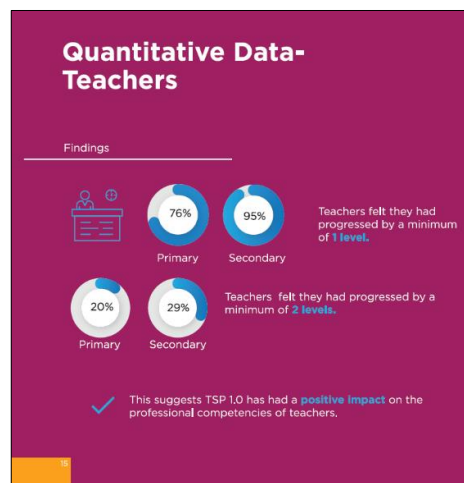
A movement of one level indicates a paradigm shift in levels of knowledge, skills, thinking, pedagogy and practice. In many cases, professionals may not even experience one level of shift throughout their entire career as it requires continuous self-reflection and a growth mindset.

Respectively, 86% of primary and 91% of secondary Middle Leaders observed a minimum progression of 1 level. As for the Senior Leadership team, 76% of primary and 83% of secondary Senior Leaders indicated a minimum progression of 1 level. Of the 124 Middle Leaders surveyed, 8% indicated a progress of 3 levels, equivalent to a very high level of teaching excellence. The study also showed that the TSP 1.0 has had a positive impact on the professional competencies of school staff, allowing them to nurture students and provide quality learning in the classrooms.



Trust Schools Programme has had the greatest impact on the professional competencies of the Middle Leaders.

Progress Levels

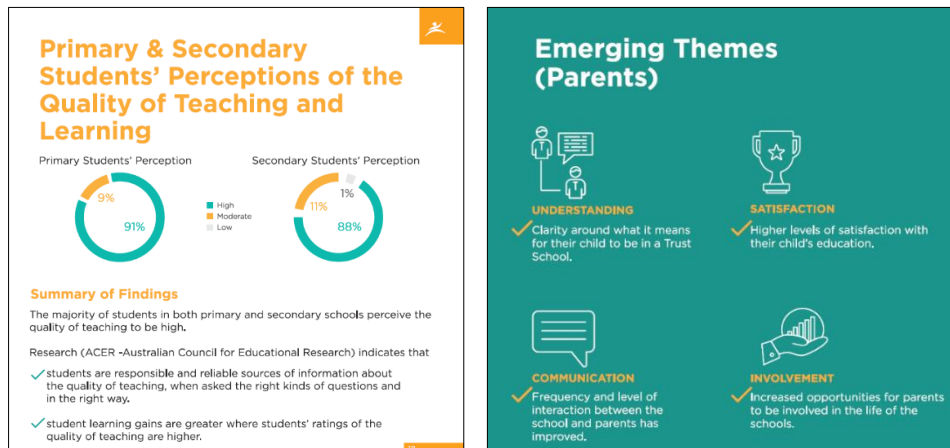


LeapEd's TSP 1.0 Impact Study shows that the programme has had an overall positive impact on the professional competencies of teachers, with students perceiving the quality of teaching to be high.

High quality teaching and learning

Over 3,139 students and parents interviewed reported that students under TSP 1.0 received quality teaching. The study also shows that parents reacted positively to the programme as they

observed an increase in opportunities for students to be involved in the life of the schools, as well as an increase in the frequency and level of interaction between schools, parents and the wider community. Furthermore, school climate is both a strong influencer of students' life satisfaction, well-being and student outcomes.



Parents and students happy and satisfied with the quality of teaching and learning.

TSP 2.0 Underway

The TSP 1.0 transformation approach focuses on a public-private partnership ('PPP') outreach model, working collaboratively with school leadership teams, teachers, students, parents and the community.

To ensure that the programme remains transformative, sustainable and scalable, the research also identified opportunities to further enhance the programme. Some of the areas identified include customising interventions, depending on the individual needs of schools. This will allow expansion of the model to better cater to groups with specific needs such as indigenous and other minority groups, students with special needs, as well as rural and under-enrolled schools.

Hence, TSP 2.0 is the next evolution of LeapEd's Trust Schools Programme, which leverages on the success and learnings of TSP 1.0. Designed as a model that is both sustainable and scalable, TSP 2.0 has been launched in 2019 in selected Malaysian public schools.

Zulhaimi added, ***"We believe that investing in education is the smartest decision one can make. Education provides opportunity which in turn empowers people, cultivates creativity and improves confidence and self-belief. Through the Impact Study, we have seen how the Trust Schools Programme has positively impacted the lives of teachers, students and parents. Leveraging on the success and learnings of this programme, we are committed to continue working with our partners to implement a new and enhanced model, TSP 2.0, which will be aligned to global trends and national aspirations."***

About LeapEd Services

LeapEd Services Sdn Bhd ('LeapEd') which is a wholly-owned subsidiary of Khazanah Nasional Berhad, is Malaysia's first homegrown education service provider and trusted social enterprise. LeapEd aims to develop holistic students with 21st century competencies and schools that embed sustainable education practices. Working closely with its strategic partners and the Ministry of Education Malaysia, LeapEd focuses on initiating the movement towards student-centred education, realising the individual potential of every learner.

Since its establishment in 2010, LeapEd has designed and implemented various intervention models such as the District Transformation Programme-AMAN ('DTP-AMAN'), Islamic School Enhancement Programme ('ISEP'), Ground-up School Transformation ('GUSTO') programme, *Program Sekolah Transformasi* ('PreSTasi') as well as the nation's first Trust Schools Programme (TSP). These intervention models have since impacted over 71,000 students, 6,000 teachers and 160 schools across 13 states nationwide.

For more information, please visit: www.leapedservices.com

Issued by Perspective Strategies. For media enquiries, please contact:

Tel: 03 - 7491 3138, Fax: 03 - 7733 3138

Charmaine Jeeva, Ms

Email : charmaine.jeeva@perspective.com.my

Mobile : 012 610 4802

Anita Teh, Ms

Email : anita.teh@perspective.com.my

Mobile : 014 396 9433